

# SLIDE RSL12V & RSL12VH

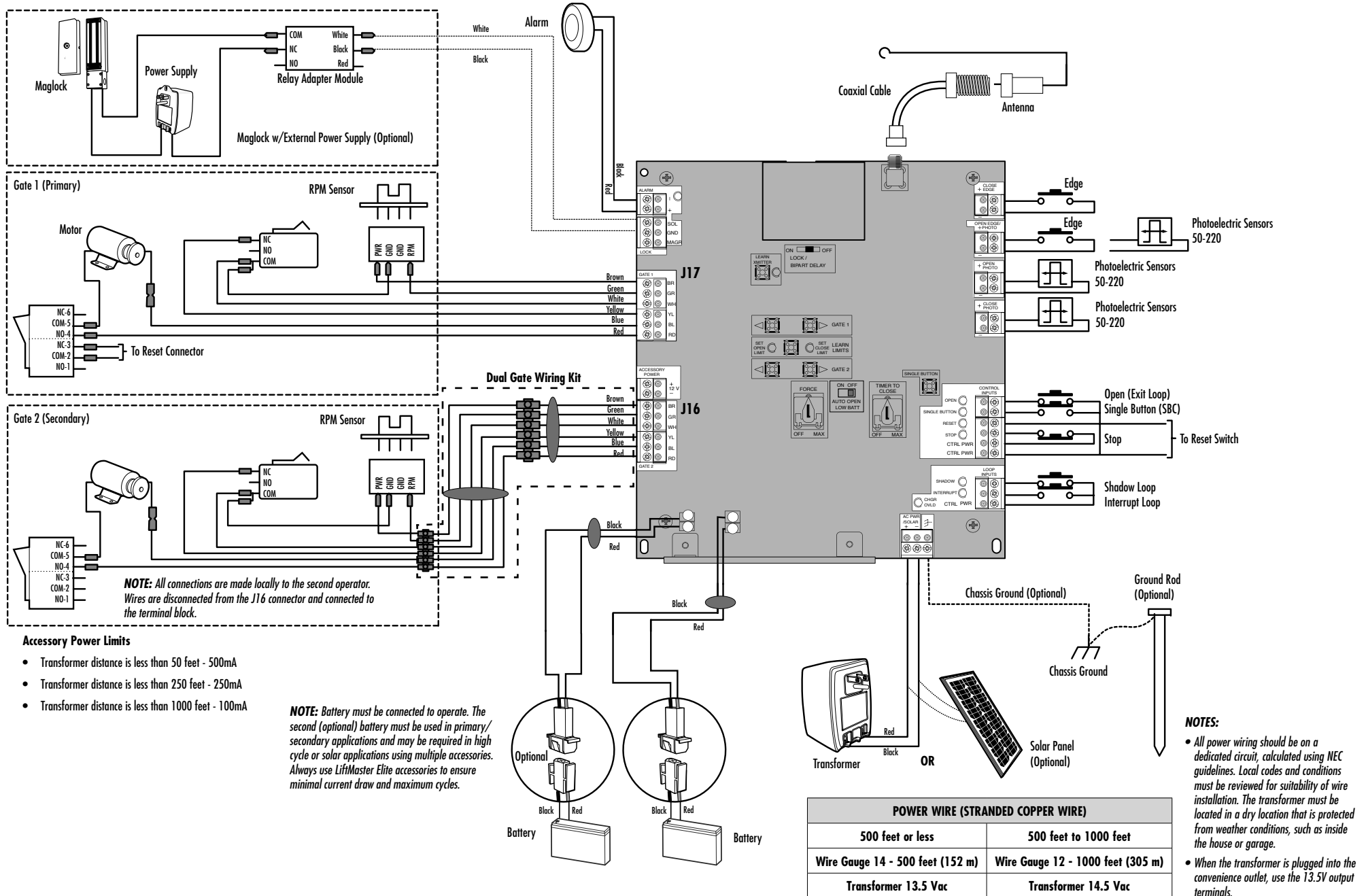
## ⚡ WARNING

To protect against fire and electrocution:

- DISCONNECT power and battery BEFORE installing or servicing operator.

For continued protection against fire:

- Replace ONLY with fuse of same type and rating.



### Accessory Power Limits

- Transformer distance is less than 50 feet - 500mA
- Transformer distance is less than 250 feet - 250mA
- Transformer distance is less than 1000 feet - 100mA

**NOTE:** Battery must be connected to operate. The second (optional) battery must be used in primary/secondary applications and may be required in high cycle or solar applications using multiple accessories. Always use LiftMaster Elite accessories to ensure minimal current draw and maximum cycles.

### NOTES:

- All power wiring should be on a dedicated circuit, calculated using NEC guidelines. Local codes and conditions must be reviewed for suitability of wire installation. The transformer must be located in a dry location that is protected from weather conditions, such as inside the house or garage.
- When the transformer is plugged into the convenience outlet, use the 13.5V output terminals.

### POWER WIRE (STRANDED COPPER WIRE)

500 feet or less	500 feet to 1000 feet
Wire Gauge 14 - 500 feet (152 m)	Wire Gauge 12 - 1000 feet (305 m)
Transformer 13.5 Vac	Transformer 14.5 Vac

# SWING RSW12V & RSW12VH

## ⚡ WARNING

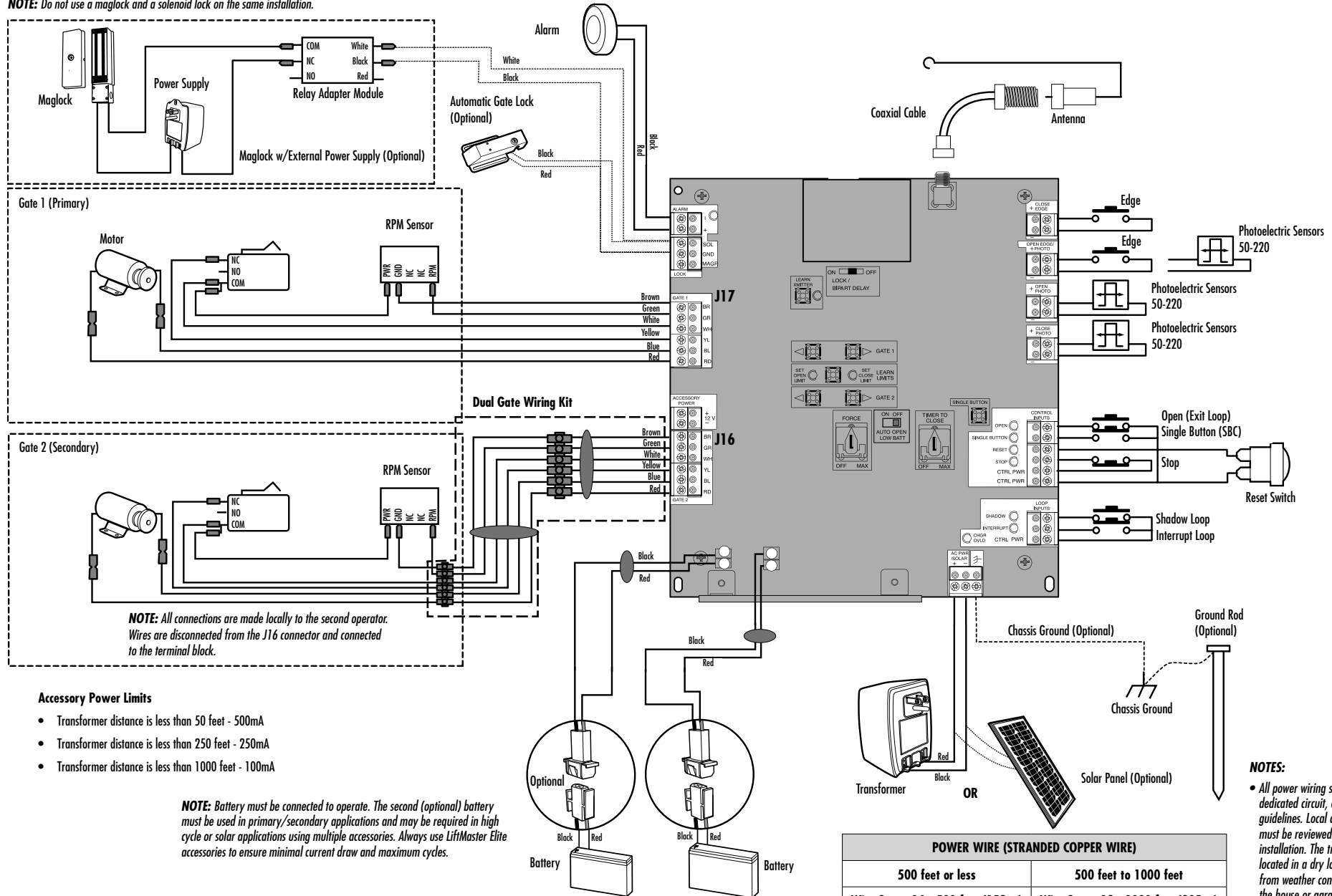
To protect against fire and electrocution:

- DISCONNECT power and battery BEFORE installing or servicing operator.

For continued protection against fire:

- Replace ONLY with fuse of same type and rating.

**NOTE:** Do not use a maglock and a solenoid lock on the same installation.



POWER WIRE (STRANDED COPPER WIRE)	
500 feet or less	500 feet to 1000 feet
Wire Gauge 14 - 500 feet (152 m)	Wire Gauge 12 - 1000 feet (305 m)
Transformer 13.5 Vac	Transformer 14.5 Vac